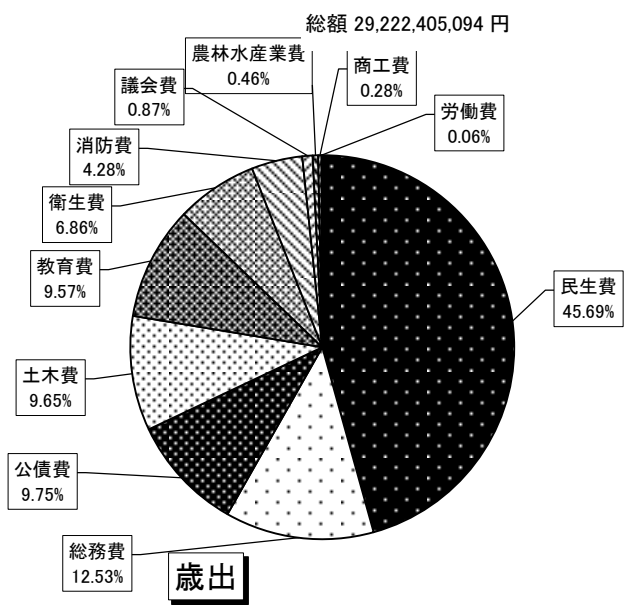
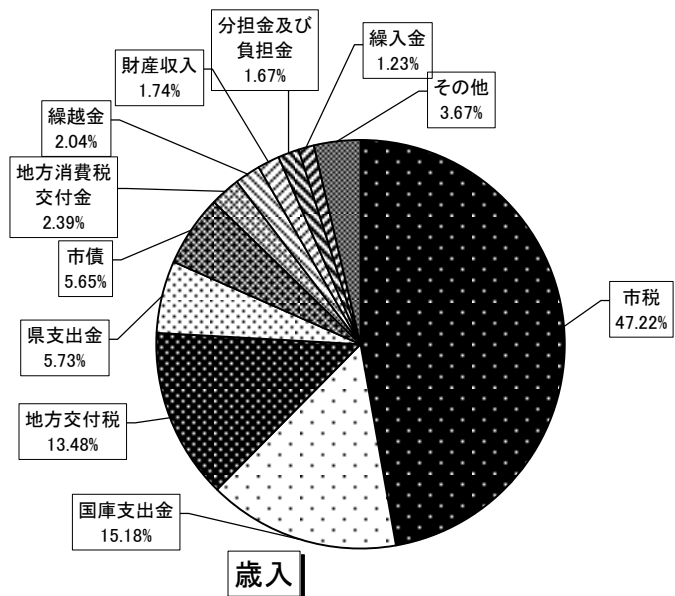


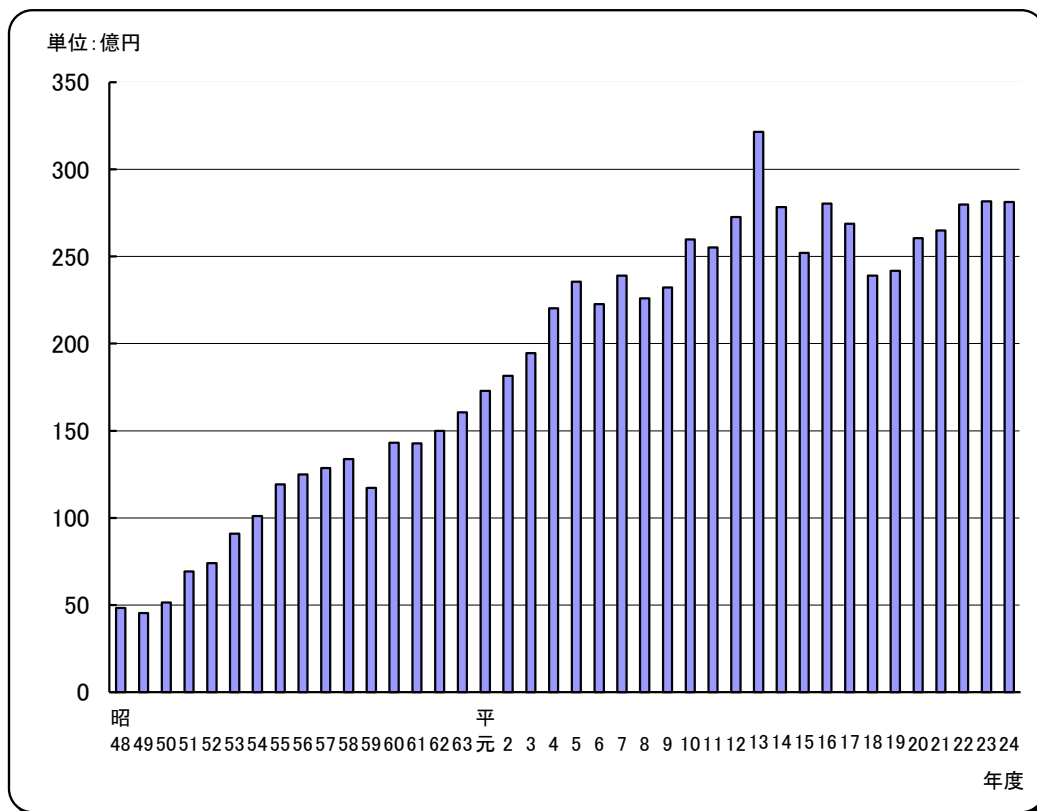
1 平成24年度 一般会計歳入歳出決算



款別	決算額	構成比
市 税	13,798,870,284	47.22
地方譲与税	200,149,276	0.68
利子割交付金	32,470,000	0.11
配当割交付金	32,727,000	0.11
株式等譲渡所得割交付金	9,455,000	0.03
地方消費税交付金	698,963,000	2.39
ゴルフ場利用税交付金	2,227,510	0.01
自動車取得税交付金	86,650,000	0.30
地方特例交付金	90,936,000	0.31
地方交付税	3,940,012,000	13.48
交通安全対策特別交付金	13,788,000	0.05
分担金及び負担金	487,049,152	1.67
使用料及び手数料	286,563,853	0.98
国庫支出金	4,436,694,244	15.18
県支出金	1,673,666,784	5.73
財産収入	508,727,374	1.74
寄附金	6,397,305	0.02
繰入金	359,966,192	1.23
繰越金	595,093,802	2.04
諸収入	311,298,318	1.07
市債	1,650,700,000	5.65
合 計	29,222,405,094	100.00

款別	決算額	構成比
議 会 費	244,899,300	0.87
総 務 費	3,524,914,338	12.53
民 生 費	12,849,184,019	45.69
衛 生 費	1,929,532,318	6.86
労 働 費	15,896,947	0.06
農 林 水 産 業 費	129,036,052	0.46
商 工 費	79,365,625	0.28
土 木 費	2,714,491,222	9.65
消 防 費	1,205,114,912	4.28
教 育 費	2,691,552,539	9.57
災 害 復 旧 費	-	-
公 債 費	2,741,242,467	9.75
予 備 費	-	-
合 計	28,125,229,739	100.00

12財政
2 一般会計歳出額の推移



年 度	一般会計
昭 48	4,833,426,110
昭 49	4,538,768,740
昭 50	5,139,523,208
昭 51	6,924,939,091
昭 52	7,397,652,311
昭 53	9,101,031,785
昭 54	10,107,016,332
昭 55	11,922,100,238
昭 56	12,486,099,985
昭 57	12,860,236,566
昭 58	13,382,292,409
昭 59	11,725,638,303
昭 60	14,303,909,854
昭 61	14,272,350,779
昭 62	14,994,830,978
昭 63	16,054,185,736
平 元	17,297,220,802
平 2	18,147,428,814
平 3	19,454,309,214
平 4	22,034,145,309
平 5	23,547,881,703
平 6	22,275,153,091
平 7	23,900,823,771
平 8	22,598,265,605
平 9	23,216,823,865
平10	25,984,737,215
平11	25,517,503,561
平12	27,269,635,069
平13	32,157,300,473
平14	27,843,063,544
平15	25,211,355,196
平16	28,028,046,273
平17	26,878,221,201
平18	23,911,302,369
平19	24,175,448,623
平20	26,043,434,881
平21	26,494,966,201
平22	27,986,632,113
平23	28,156,021,660
平24	28,125,229,739

3 決算の推移(歳入)

単位:円

年 度	総 額	一 般 会 計	特 別 会 計
昭48	5,413,187,675	5,070,585,366	342,602,309
49	5,519,186,275	4,975,932,088	543,254,187
50	6,219,001,593	5,468,510,692	750,490,901
51	8,461,270,363	7,214,566,956	1,246,703,407
52	9,225,374,859	7,569,922,750	1,655,452,109
53	12,087,344,271	9,349,591,694	2,737,752,577
54	13,621,424,115	10,373,324,899	3,248,099,216
55	15,546,206,470	12,253,191,838	3,293,014,632
56	16,005,742,647	12,776,399,048	3,229,343,599
57	17,044,439,772	13,198,007,114	3,846,432,658
58	16,913,958,194	13,846,628,724	3,067,329,470
59	15,644,078,065	12,322,521,194	3,321,556,871
60	18,517,558,523	14,761,478,611	3,756,079,912
61	19,383,272,813	14,988,896,292	4,394,376,521
62	21,032,148,926	15,913,987,334	5,118,161,592
63	22,886,597,595	17,239,359,984	5,647,237,611
平 元	24,757,317,707	18,840,102,044	5,917,215,663
2	25,663,944,745	19,560,177,704	6,103,767,041
3	26,780,445,100	20,475,033,048	6,305,412,052
4	29,820,157,679	23,291,746,748	6,528,410,931
5	31,815,707,322	24,552,810,922	7,262,896,400
6	30,683,536,098	23,091,319,886	7,592,216,212
7	33,194,339,148	24,959,772,320	8,234,566,828
8	32,642,220,013	23,635,729,659	9,006,490,354
9	33,699,965,496	24,229,217,182	9,470,748,314
10	37,700,917,672	27,157,807,331	10,543,110,341
11	38,265,875,417	26,748,492,881	11,517,382,536
12	43,016,573,719	29,124,639,199	13,891,934,520
13	49,712,367,789	34,151,052,656	15,561,315,133
14	46,045,339,433	29,511,421,975	16,533,917,458
15	43,493,327,510	26,710,482,481	16,782,845,029
16	45,884,233,768	29,106,362,895	16,777,870,873
17	45,572,613,402	27,950,157,068	17,622,456,334
18	43,144,313,851	25,087,847,756	18,056,466,095
19	44,047,468,012	24,899,205,422	19,148,262,590
20	43,132,889,571	27,196,796,240	15,936,093,331
21	43,624,220,942	27,456,503,161	16,167,717,781
22	45,375,087,807	28,763,563,730	16,611,524,077
23	45,720,296,703	28,156,021,660	17,564,275,043
24	48,289,361,123	29,222,405,094	19,066,956,029

資料:決算書

4 決算の推移(歳出)

単位:円

年 度	総 額	一 般 会 計	特 別 会 計
昭48	5,164,469,997	4,833,426,110	331,043,887
49	5,062,006,197	4,538,768,740	523,237,457
50	5,870,949,394	5,139,523,208	731,426,186
51	8,108,137,704	6,924,939,091	1,183,198,613
52	8,909,772,513	7,397,652,311	1,512,120,202
53	11,602,363,271	9,101,031,785	2,501,331,486
54	13,241,864,291	10,107,016,332	3,134,847,959
55	15,055,749,465	11,922,100,238	3,133,649,227
56	15,509,705,104	12,486,099,985	3,023,605,119
57	16,413,304,239	12,860,236,566	3,553,067,673
58	16,380,740,228	13,382,292,409	2,998,447,819
59	15,002,176,579	11,725,638,303	3,276,538,276
60	17,979,901,852	14,303,909,854	3,675,991,998
61	18,747,978,722	14,272,350,779	4,475,627,943
62	20,078,210,023	14,994,830,978	5,083,379,045
63	21,391,882,102	16,054,185,736	5,337,696,366
平 元	23,049,488,592	17,297,220,802	5,752,267,790
2	24,034,451,539	18,147,428,814	5,887,022,725
3	25,442,754,221	19,454,309,214	5,988,445,007
4	28,287,921,169	22,034,145,309	6,253,775,860
5	30,493,428,261	23,547,881,703	6,945,546,558
6	29,659,858,952	22,275,153,091	7,384,705,861
7	31,943,140,761	23,900,823,771	8,042,316,990
8	31,261,557,831	22,598,265,605	8,663,292,226
9	32,423,310,363	23,216,823,865	9,206,486,498
10	35,755,375,035	25,874,737,215	9,880,637,820
11	36,612,929,033	25,517,503,561	11,095,425,472
12	40,366,275,497	27,269,635,069	13,096,640,428
13	46,946,894,797	32,157,300,473	14,789,594,324
14	43,741,982,441	27,843,063,544	15,898,918,897
15	41,583,614,405	25,211,355,196	16,372,259,209
16	44,548,316,889	28,028,046,273	16,520,270,616
17	43,891,013,540	26,878,221,201	17,012,792,339
18	41,345,422,853	23,911,302,369	17,434,120,484
19	43,016,381,319	24,175,448,623	18,840,932,696
20	41,241,126,006	26,043,434,881	15,197,691,125
21	42,162,596,531	26,494,966,201	15,667,630,330
22	44,346,279,720	27,986,632,113	16,359,647,607
23	45,168,421,649	28,156,021,660	17,012,399,989
24	46,522,496,951	28,125,229,739	18,397,267,212

資料:決算書

12財政
5 一般会計決算款別の推移

歳入 款 別	単位:円																			
	平 7	平 8	平 9	平 10	平 11	平 12	平 13	平 14	平 15	平 16	平 17	平 18	平 19	平 20	平 21	平 22	平 23	平 24		
市 税	11,390,105.175	11,400,382.992	12,082,342.310	11,820,356.561	11,784,543.890	11,566,493.831	11,710,896.489	11,906,147.899	11,571,496.848	11,653,219.307	12,105,742.936	12,729,742.245	13,842,763.440	14,050,633.835	13,785,081.843	13,467,165.293	13,505,749.643	13,798,870.284		
地方譲与税	536,897.000	565,476.000	338,515.886	210,839.000	218,642.000	213,740.000	228,775.000	232,455.000	246,161.000	435,128.000	621,961.000	987,381.370	245,437.000	237,988.000	224,363.255	218,651.155	212,730.262	200,149.276		
利子割交付金	298,791.000	165,713.000	130,230.000	105,713.000	105,780.000	422,632.000	442,186.000	147,961.000	105,288.000	98,335.000	71,894.000	48,240.000	67,316.000	65,710.000	53,132.000	47,108.000	36,816.000	32,470.000		
配当割交付金	—	—	—	—	—	—	—	—	—	21,203.000	38,740.000	57,715.000	70,491.000	25,956.000	20,264.000	25,285.000	28,737.000	32,727.000		
株式等譲渡所得割交付金	—	—	—	—	—	—	—	—	—	25,448.000	59,239.000	47,377.000	39,657.000	8,933.000	10,844.000	8,471.000	7,120.000	9,455.000		
地方消費税交付金	—	—	149,258.000	664,821.000	623,716.000	643,218.000	621,843.000	556,758.000	631,081.000	704,300.000	655,365.000	694,766.000	686,306.000	651,714.000	695,369.000	694,175.000	696,351.000	698,963.000		
ゴルフ場利用税交付金	9,772.036	9,663.576	8,978.472	7,402.045	5,701.965	4,196.749	2,821.950	2,712.640	3,757.145	3,578.440	3,722.986	3,752.887	3,663.251	3,743.384	2,695.331	2,549.406	2,319.396	2,227.510		
自動車取得税交付金	246,354.000	283,352.000	245,925.000	195,386.000	198,695.000	182,477.000	193,275.000	185,590.000	226,549.000	207,579.000	211,446.000	214,582.000	180,847.000	164,692.000	97,061.000	84,098.000	48,634.000	86,650.000		
地方特例交付金	—	—	—	—	433,728.000	522,801.000	521,836.000	537,150.000	545,410.000	526,451.000	525,167.000	407,465.000	84,748.000	217,104.000	202,337.000	181,143.000	191,168.000	90,936.000		
地方交付税	4,218,187.000	4,655,353.000	5,379,328.000	5,868,517.000	6,519,961.000	6,296,718.000	5,730,794.000	5,319,401.000	4,410,933.000	4,131,582.000	3,953,589.000	3,343,504.000	3,070,965.000	3,164,575.000	2,855,517.000	3,765,801.000	3,850,488.000	3,940,012.000		
交通安全対策特別交付金	14,130.000	14,911.000	16,094.000	17,063.000	17,001.000	14,437.000	14,933.000	14,943.000	16,360.000	15,891.000	16,036.000	17,313.000	16,782.000	14,609.000	14,628.000	13,763.000	13,644.000	13,788.000		
分担金及び負担金	311,077.034	268,627.911	350,527.778	444,689.859	367,570.498	264,371.595	300,819.600	328,083.208	329,606.990	327,565.424	353,942.426	394,211.363	436,943.053	431,616.165	431,809.379	455,205.261	462,087.547	487,049.152		
使用料及び手数料	225,793.495	223,125.695	225,274.613	238,456.687	278,066.244	575,372.772	633,823.504	655,687.672	647,563.927	654,309.382	636,478.772	345,371.454	294,110.888	294,076.836	298,066.164	293,529.104	286,437.680	286,563.853		
国庫支出金	1,621,822.924	1,446,349.455	1,440,831.867	1,556,456.014	2,182,125.148	2,264,966.600	2,368,486.361	2,280,543.875	2,180,028.420	2,391,779.207	2,421,055.162	2,083,520.412	2,185,006.158	3,087,057.123	4,720,997.116	4,382,582.415	4,517,411.960	4,436,694.244		
県支出金	1,167,355.886	878,111,340	841,191,340	899,864,004	939,673,852	968,385,864	1,026,204,360	925,920,115	917,212,593	853,249,449	898,497,788	983,452,455	1,258,018,879	1,224,843,061	1,356,045,182	1,734,454,688	1,539,153,276	1,673,666,784		
財産収入	347,081.984	73,717.826	72,488.228	863,552.589	73,467.888	45,607.932	44,460.938	145,751.271	36,961.882	37,033.449	43,573.384	128,318.823	39,560.061	46,384.696	23,178.058	30,835.323	28,384.527	508,727.374		
寄附金	25,497.900	61,853.397	90,825.544	45,148.441	64,390.865	36,845.197	20,586.958	49,502.706	5,366.108	17,423.362	37,669.347	3,675.447	104,884.888	1,397.735	3,111.176	2,975.961	7,548.270	6,397.305		
繰入金	704,312.134	654,950.000	650,000.000	—	232,400.000	605,245.000	2,961,504.801	899,154,954	854,701.000	1,470,665.000	1,306,274.373	0	0	500,000.000	313,845,586	795,913,866	406,040,000	359,966,192		
繰越金	430,718.292	615,312.549	618,716.054	558,032.317	828,368.116	652,868.770	1,099,853.130	1,411,107.183	870,441.431	856,063.285	554,096.622	588,753.867	642,637.387	418,570.799	664,740.359	545,584.960	449,602.617	595,093.802		
諸収入	91,028.460	107,048.918	133,098.090	286,075.814	233,048.615	488,042.889	542,652.565	298,030.452	237,264.967	208,559.590	385,366.272	564,905.433	522,634.417	766,868.606	283,296.712	274,242.298	245,240.284	311,298.318		
市債	3,318,500.000	2,210,200.000	1,452,800.000	3,371,200.000	1,637,800.000	3,355,200.000	5,685,300.000	3,614,522.000	2,874,300.000	4,467,000.000	3,050,300.000	1,443,800.000	1,106,434.000	1,820,323.000	1,400,121.000	1,740,030.000	2,609,374.000	1,650,700.000		
特別地方消費税交付金	2,348.000	1,581.000	2,792.000	4,234.000	3,813.000	1,019.000	—	—	—	—	—	—	—	—	—	—	—	—		
合 計	24,959,772.320	23,635,729.659	24,229,217.182	27,157,807.331	26,748,492.881	29,124,639.199	34,151,052.656	29,511,421.975	26,710,482.481	29,106,362.895	27,950,157.068	25,087,847.756	24,899,205.422	27,196,796.240	27,456,503.161	28,763,563.730	29,145,037.462	29,222,405.094		

資料:決算書

歳出 款 別	単位:円																			
	平 7	平 8	平 9	平 10	平 11	平 12	平 13	平 14	平 15	平 16	平 17	平 18	平 19	平 20	平 21	平 22	平 23	平 24		
議会費	297,201.502	300,623.189	291,903.195	284,949.200	270,850.650	269,122.770	266,402.071	264,865.540	261,642.290	263,847.220	227,862.957	231,005.682	232,391.094	230,216.373	212,345.400	213,548.516	282,158.711	244,899.300		
総務費	3,279,253.580	3,311,811,111	3,646,961,860	3,576,126,798	3,447,797,787	5,099,453,186	5,226,271,862	6,125,763,606	3,503,369,717	3,718,621,883	3,663,105,264	3,606,824,395	3,349,907,942	3,569,381,884	5,128,384,070	3,774,587,625	3,411,049,861	3,524,914,338		
民生費	7,289,560,594	5,521,801,250	5,788,311,798	5,861,054,895	6,794,933,873	6,662,698,713	7,476,532,397	7,751,734,329	8,119,422,690	8,744,199,707	8,748,171,630	8,118,759,745	8,868,194,766	8,863,127,744	9,233,535,102	11,791,235,040	11,925,410,343	12,849,184,019		
衛生費	2,088,450,287	2,040,317,906	2,126,640,160	2,030,153,033	2,215,406,584	2,138,960,625	2,052,090,089	2,059,830,506	2,065,073,380	2,221,508,569	2,314,715,378	2,395,364,370	2,331,834,948	1,879,877,338	1,824,332,559	1,832,491,431	1,896,659,458	1,929,532,318		
労働費	14,117,503	15,104,248	14,542,157	14,578,374	137,113,829	85,081,552	88,604,352	74,977,615	69,560,316	68,846,754	49,796,861	45,558,070	35,996,915	32,386,906	29,432,176	22,396,160	16,735,464	15,896,947		
農林水産業費	418,331,735	378,297,756	237,599,852	220,664,021	294,283,323	198,930,818	175,614,204	154,337,284	211,740,659	183,873,166	163,275,317	139,521,454	137,466,230	125,780,982	115,559,010	120,104,082	123,833,565	129,036,052		
商工費	76,752,571	88,272,536	68,208,312	98,325,797	80,612,632	71,911,969	76,110,143	89,304,215	96,259,828	102,371,380	85,762,948	85,577,532	46,621,063	43,277,991	63,829,976	57,798,441	77,485,112	79,365,625		
土木費	4,522,966,691	4,762,700,642	4,475,306,853	5,935,597,352	4,228,344,813	4,746,633,090	5,854,768,420	4,206,197,029	3,925,975,068	2,733,598,519	4,153,832,532	2,956,781,164	2,798,386,376	2,908,600,974	2,860,324,232	3,113,750,837	2,866,126,396	2,714,491,222		
消防費	771,421,189	823,846,478	845,204,365	863,200,974	889,243,675	910,169,091	896,459,864	987,468,513	1,010,751,028	1,033,900,598	963,419,739	999,400,957	1,003,262,538	1,041,803,221	998,707,307	1,013,085,837	1,052,226,503	1,205,114,912		
教育費	2,855,286,264	3,171,864,950	2,920,747,097	3,840,504,322	3,844,420,785	4,389,452,311	7,837,893,792	3,640,430,837	3,163,839,647	3,872,710,407	3,053,585,391	2,479,479,956	2,350,865,467	4,048,315,412	3,141,550,393	2,532,504,373	2,492,490,907	2,691,552,539		
災害復旧費	—	4,549,902	—	—	20,820,000	9,525,000	—	—	—	1,281,210	0	0	0	0	0	0	—	—		
公債費	2,287,011,676	2,179,075,637	2,801,398,216	3,149,582,449	3,070,410,810	2,687,695,944	2,206,553,279	2,488,154,070	2,783,720,573	5,083,286,860	3,454,693,184	2,853,029,044	3,020,521,284	3,300,666,056	2,886,965,976	3,515,129,771	4,011,845,340	2,741,242,467		
諸支出金	470,179	—	—	—	223,264,800	—	—	—	—	—	—	—	—	—	—	—	—	—		
予備費	—	—	—	—	—	—	—	—	—	—	—	—	—	—	—	—	—	—		
合 計	23,900,823,771	22,598,265,605	23,216,823,865	25,874,737,215	25,517,503,561	27,269,635,069	32,157,300,473	27,843,063,544	25,211,355,196	28,028,046,273	26,878,221,201	23,911,302,369	24,175,448,623	26,043,434,881	26,494,966,201	27,986,632,113	28,156,021,660	28,125,229,739		

資料:決算書

6 国民健康保険特別会計決算の推移

歳入		単位:千円															
年度	平 8	平 9	平 10	平 11	平 12	平 13	平 14	平 15	平 16	平 17	平 18	平 19	平 20	平 21	平 22	平 23	平 24
国民健康保険税	1,884,829	1,943,401	2,400,154	2,456,919	2,683,238	2,773,449	2,866,260	2,899,089	2,932,553	3,086,715	3,160,673	3,161,747	2,814,049	2,758,294	2,623,882	2,559,184	2,540,272
使用料及び手数料	2	2	7	9	8	5	13	17	-	-	-	-	-	-	-	-	-
国庫支出金	1,391,213	1,422,802	1,412,275	1,656,678	1,797,164	1,962,752	2,174,040	2,448,756	2,456,770	2,450,054	2,258,098	2,144,113	2,195,813	2,420,669	2,295,925	2,387,828	2,193,217
療養給付費交付金	567,051	560,659	628,318	763,970	894,989	965,885	896,504	1,162,159	1,280,052	1,608,349	1,685,583	1,975,068	628,700	601,343	326,652	501,113	544,346
前期高齢者交付金	-	-	-	-	-	-	-	-	-	-	-	-	1,835,874	2,020,118	2,666,271	3,078,779	3,119,917
県支出金	16,028	17,271	15,234	11,598	4,585	1,187	2,144	43,872	39,472	313,026	449,324	467,546	426,222	450,307	476,107	485,895	574,887
共同事業交付金	138	89,016	93,022	99,167	89,719	87,823	93,115	122,110	139,705	171,963	548,156	934,098	1,082,762	1,090,730	1,022,307	935,384	1,247,385
財産収入	594,167	54	97	24	31	11	15	11	8	5	8	51	69	44	21	12	12
繰入金	136,341	589,582	355,103	453,489	474,198	510,673	778,265	1,030,822	1,081,183	1,098,062	731,547	1,057,873	846,029	551,788	957,012	723,860	1,138,097
繰越金	79,626	200,445	195,014	230,717	316,485	332,769	214,972	202,821	105,572	27,703	315,822	171,010	155,617	268,864	63,124	62,576	75,689
諸収入	11,154	11,893	16,960	15,885	17,429	16,661	16,753	18,873	34,705	18,188	17,726	20,207	20,527	29,626	22,339	18,649	23,838
連合会支出金	-	-	-	-	8,463	11,021	-	-	-	-	-	-	-	-	-	-	-
合 計	4,680,549	4,835,125	5,116,184	5,688,456	6,286,309	6,662,236	7,042,081	7,928,530	8,070,020	8,774,065	9,166,937	9,931,713	10,005,662	10,191,783	10,453,640	10,753,280	11,457,660

資料:決算書

歳出		単位:千円															
年度	平 8	平 9	平 10	平 11	平 12	平 13	平 14	平 15	平 16	平 17	平 18	平 19	平 20	平 21	平 22	平 23	平 24
総務費	42,475	43,591	40,917	81,194	71,937	48,139	55,085	49,899	78,188	62,680	52,015	79,166	109,540	49,307	55,349	51,270	70,227
保険給付費	3,100,567	3,307,613	3,482,667	3,686,863	3,962,049	4,184,282	3,923,412	4,693,199	5,144,503	5,621,160	5,912,984	6,351,368	6,577,289	6,893,927	7,096,153	7,353,709	7,468,621
後期高齢者支援金等	-	-	-	-	-	-	-	-	-	-	-	-	1,205,705	1,364,351	1,305,416	1,440,122	1,574,143
前期高齢者納付金等	-	-	-	-	-	-	-	-	-	-	-	-	1,624	3,879	2,245	4,259	1,683
老人保健拠出金	1,266,403	1,224,250	1,294,051	1,539,030	1,522,741	1,789,192	2,421,916	2,474,948	2,129,517	1,984,622	1,875,927	1,786,346	203,413	40,641	24,197	1,464	63
介護納付金	-	-	-	-	310,923	357,356	368,823	430,511	525,292	606,327	604,277	558,394	490,009	477,988	504,787	563,374	601,728
共同事業拠出金	38,953	43,141	45,001	43,771	45,861	49,356	52,280	154,013	147,873	160,599	486,089	889,435	990,540	1,151,987	1,100,550	1,054,473	1,383,146
保健事業費	23,733	16,376	17,495	17,360	16,931	10,990	14,006	13,981	12,051	14,292	13,440	14,678	98,170	111,654	115,197	119,028	123,693
基金積立金	138	54	97	24	31	11	14	11	8	5	8	51	69	44	21	12	12
公債費	-	-	-	-	-	-	-	1,318	-	-	-	-	-	-	-	-	-
諸支出金	7,835	5,086	5,238	3,728	23,067	7,938	3,724	5,078	4,886	8,558	51,186	96,658	60,439	34,882	187,149	89,880	169,153
予備費	-	-	-	-	-	-	-	-	-	-	-	-	-	-	-	-	-
合 計	4,480,104	4,640,111	4,885,466	5,371,970	5,953,540	6,447,264	6,839,260	7,822,958	8,042,318	8,458,243	8,995,926	9,776,096	9,736,798	10,128,660	10,391,064	10,677,591	11,392,469

資料:決算書

12財政

7 水道事業会計決算の推移

単位:千円

年 度	収益的収入及び支出		資本的収入及び支出	
	収 入	支 出	収 入	支 出
61	1,323,241	1,030,086	71,421	271,585
62	1,314,629	1,146,813	128,538	670,299
63	1,270,393	1,118,424	167,661	690,242
平 元	1,284,548	1,198,366	530,381	650,395
2	1,323,611	1,212,858	749,079	858,786
3	1,427,133	1,329,947	839,107	1,458,903
4	1,405,303	1,476,398	679,697	1,262,829
5	1,510,367	1,618,384	218,474	494,572
6	1,721,099	1,638,623	183,521	468,535
7	1,765,818	1,530,656	293,450	589,149
8	1,674,458	1,524,535	260,552	550,604
9	1,859,024	1,602,553	269,883	560,072
10	1,776,785	1,645,853	267,436	724,241
11	1,808,629	1,683,858	262,774	525,903
12	1,749,801	1,670,410	235,695	602,825
13	1,789,343	1,703,017	163,140	537,287
14	1,767,494	1,661,849	136,858	673,770
15	1,707,000	1,625,812	124,649	518,989
16	1,737,673	1,618,363	76,644	560,860
17	1,704,549	1,594,192	10,983	455,707
18	1,760,590	1,593,435	2,202	333,006
19	1,701,706	1,585,732	3,031	376,532
20	1,604,623	1,575,878	2,668	380,784
21	1,685,877	1,530,325	2,053	642,845
22	1,669,891	1,505,522	6,829	776,790
23	1,644,172	1,556,433	1,349	311,512
24	1,680,701	1,590,349	3,400	365,465

資料:水道事業決算書

12財政

8 下水道事業会計決算の推移

単位:千円

年 度	収益収入及び支出		資本的収入及び支出	
	収 入	支 出	収 入	支 出
昭 61	867,590	806,546	1,439,424	1,620,933
62	955,329	895,514	1,598,746	1,769,597
63	1,077,169	1,012,301	1,562,036	1,788,051
平 元	1,148,731	1,073,954	1,301,173	1,654,566
2	1,251,624	1,166,345	1,198,699	1,518,272
3	1,476,065	1,323,918	1,121,961	1,579,152
4	1,554,948	1,376,386	1,427,880	1,805,836
5	1,598,613	1,483,529	1,850,310	2,143,734
6	1,709,984	1,581,637	1,509,854	1,770,000
7	1,612,959	1,623,117	884,757	1,153,051
8	1,613,411	1,638,537	701,516	1,067,022
9	1,587,391	1,693,619	670,436	1,095,945
10	1,599,337	1,737,725	915,741	1,380,802
11	1,688,811	1,763,007	760,924	1,292,933
12	1,734,332	1,738,669	889,898	1,443,686
13	1,752,717	1,749,032	670,520	1,238,423
14	1,806,758	1,735,856	319,273	1,091,474
15	1,587,484	1,786,697	849,936	1,366,144
16	1,719,572	1,818,001	910,512	1,616,999
17	1,733,921	1,791,615	377,796	1,133,507
18	1,696,242	1,781,245	560,503	1,165,731
19	1,672,521	1,724,688	1,466,888	2,099,793
20	1,765,466	1,658,091	312,626	1,136,802
21	1,721,994	1,608,008	286,453	1,094,385
22	2,057,681	1,611,183	298,028	1,075,526
23	1,700,275	1,591,698	398,658	1,153,590
24	1,564,893	1,551,155	520,997	1,244,986

資料:下水道事業決算書

12財政

9 住民1人当たりの市税負担額の推移

単位:円

年 度	平 6	平 7	平 8	平 9	平 10	平 11	平 12	平 13	平 14	平 15	平 16	平 17	平 18	平 19	平 20	平 21	平 22	平 23	平 24	
住基人口(10月1日)	95,845	96,121	96,467	97,511	98,762	100,762	102,277	102,436	102,881	103,954	103,628	103,464	103,485	103,952	104,139	104,932	105,596	105,945	107,805	
市民税	税 額	6,054,813,829	6,304,339,511	6,134,922,071	6,714,688,840	6,269,120,458	6,022,494,817	5,849,849,510	5,878,750,639	5,922,294,455	5,635,358,330	5,595,917,383	5,857,158,345	6,500,245,505	7,453,624,479	7,508,601,198	7,220,581,666	6,758,308,201	6,574,927,621	7,025,310,997
	1人当たり	63,173	65,588	63,596	68,861	63,477	59,770	57,196	57,389	57,565	54,210	54,000	56,611	62,813	71,703	72,102	68,812	64,002	62,060	65,167
固定資産税	税 額	3,331,699,166	3,647,848,931	3,914,026,260	3,943,194,430	4,088,081,473	4,236,448,411	4,202,268,428	4,308,664,994	4,456,523,854	4,421,325,991	4,515,215,272	4,703,143,987	4,669,859,215	4,802,500,739	4,935,576,466	4,968,585,614	5,065,401,398	5,137,652,259	5,003,212,224
	1人当たり	34,761	37,951	40,574	40,438	41,393	42,044	41,087	42,062	43,317	42,532	43,571	45,457	45,126	46,199	47,394	47,351	47,970	48,494	46,410
軽自動車税	税 額	40,809,100	41,351,185	42,518,100	43,395,700	44,286,300	45,996,040	49,094,860	52,951,243	55,185,830	57,558,327	61,293,000	64,078,300	67,699,735	71,299,600	73,677,300	75,712,668	79,004,600	80,532,500	83,480,600
	1人当たり	426	430	441	445	448	456	480	517	536	554	591	619	654	686	707	722	748	760	774
市たばこ税	税 額	401,687,633	416,897,333	422,701,281	509,794,808	527,461,161	565,198,520	572,934,176	564,217,085	548,764,635	560,675,841	576,898,827	558,634,751	574,554,963	586,501,649	584,537,149	573,846,753	613,127,600	723,204,426	722,784,327
	1人当たり	4,191	4,337	4,382	5,228	5,341	5,609	5,602	5,508	5,334	5,393	5,567	5,399	5,552	5,642	5,613	5,469	5,806	6,826	6,705
旧法による税	税 額	-	-	-	-	-	-	-	-	-	-	-	-	-	-	-	-	-	-	-
	1人当たり	-	-	-	-	-	-	-	-	-	-	-	-	-	-	-	-	-	-	-
特別土地保有税	税 額	37,476,900	31,976,700	25,573,000	12,877,600	-	-	-	-	-	-	-	-	-	-	-	-	-	-	-
	1人当たり	391	333	265	132	-	-	-	-	-	-	-	-	-	-	-	-	-	-	-
都市計画税	税 額	864,300,730	947,691,515	860,642,280	858,390,932	889,132,869	914,406,102	892,346,857	906,312,528	923,379,125	896,578,359	903,894,825	922,727,553	917,382,827	928,836,973	948,241,722	946,355,142	951,323,494	989,432,837	964,082,136
	1人当たり	9,018	9,859	8,922	8,803	9,003	9,075	8,725	8,848	8,975	8,625	8,722	8,918	8,865	8,935	9,106	9,019	9,009	9,339	8,943

資料:決算書

12財政

10 平成25年度一般会計当初予算

歳 入				歳 出			
				単位:千円			
款別	当初予算額	構成比(%)		款別	当初予算額	構成比(%)	
市 税	13,698,900	45.73		議 会 費	257,587	0.86	
地 方 譲 与 税	199,000	0.66		総 務 費	3,743,126	12.50	
利 子 割 交 付 金	33,000	0.11		民 生 費	13,489,600	45.03	
配 当 割 交 付 金	28,000	0.09		衛 生 費	1,932,452	6.45	
株 式 等 譲 渡 金	7,000	0.02		労 働 費	11,976	0.04	
所 得 割 交 付 金				農 林 水 産 業 費	118,442	0.40	
地 方 消 費 税 交 付 金	700,000	2.34		商 工 費	60,243	0.20	
ゴルフ場利用税交付金	2,000	0.01		土 木 費	3,211,236	10.72	
自動車取得税交付金	83,000	0.28		消 防 費	1,166,442	3.89	
地方特例交付金	84,000	0.28		教 育 費	3,251,371	10.85	
地 方 交 付 税	3,600,000	12.02		災 害 復 旧 費	1	0.00	
交 通 安 全 対 策 金	13,000	0.04		公 債 費	2,664,412	8.89	
特 別 交 付 金				予 備 費	50,000	0.17	
分 担 金 及 び 負 担 金	524,892	1.75					
使 用 料 及 び 手 数 料	290,434	0.97					
国 庫 支 出 金	4,815,114	16.07					
県 支 出 金	1,616,711	5.40					
財 産 収 入	518,657	1.73					
寄 附 金	68,021	0.23					
繰 入 金	512,106	1.71					
繰 越 金	250,000	0.84					
諸 収 入	335,853	1.12					
市 債	2,577,200	8.60					
合 計	29,956,888	100.00		合 計	29,956,888	100.00	

資料:平成25年度当初予算書